

HOUSE AND LAND PACKAGE



Stanten

Plymouth Facade Option



Lot 107 Civic Street, Sovereign Rose Estate
Diggers Rest - 300m²

4

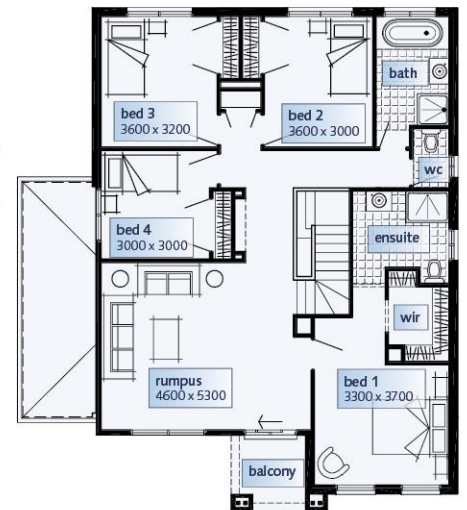
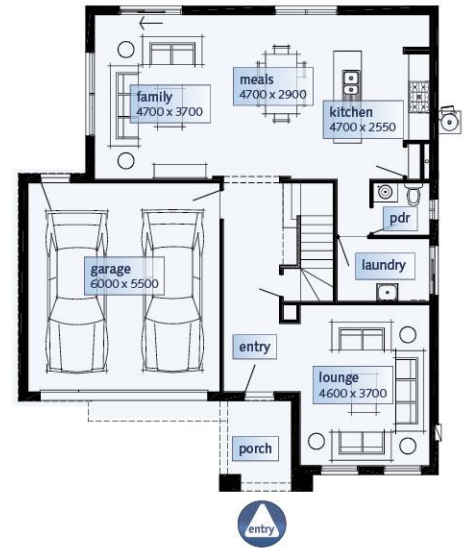
2

2

From \$589,200

Package Includes:

- ✓ Fixed Price
- ✓ Guaranteed Site Start & Completion Date
- ✓ 900mm Appliances
- ✓ Colourbond Sectional Lift Garage
- ✓ Tiles to Wet Areas
- ✓ Gas Ducted Heating
- ✓ Brickwork Above Windows
- ✓ Solar Hot Water
- ✓ 6 Star Energy Rating
- ✓ 20mm Stone Benchtop to Kitchen
- ✓ Semi-Frameless Shower Door
- ✓ China Basins to Bathrooms & Ensuite



STANTEN		
Dimensions	SQ.M	Squares
Ground Floor	98.94m ²	10.65Sqs
First Floor	124.50m ²	13.40Sqs
Porch	5.36m ²	0.58Sqs
Balcony	4.43m ²	0.48Sqs
Garage	36.28m ²	3.91Sqs
Total area	269.51m ²	29.01Sqs
Width 11.99m		
Depth 13.88m		
Suggested minimum block width: 14.00m New Living range specification		

Please contact: **Simonds Homes**

Name **Stephen Gochman – New Home Consultant**

Number **0408 802 121**

1300 SIMONDS simonds.com.au

SIMONDS
we're in it together

Images shown for illustrative purposes and may not represent the final product. Prices are based on availability and price of land. Simonds reserves the right to alter any price or substitute any home without prior notice. All house and land packages are subject to developers' final approval. In the event that a Homesite does not have Survey Pegs in place to identify lot boundary then an additional charge will be added to the cost of the house.