

# FIXED PRICE

## HOUSE AND LAND PACKAGE



### Palisade

Franklin Facade Option

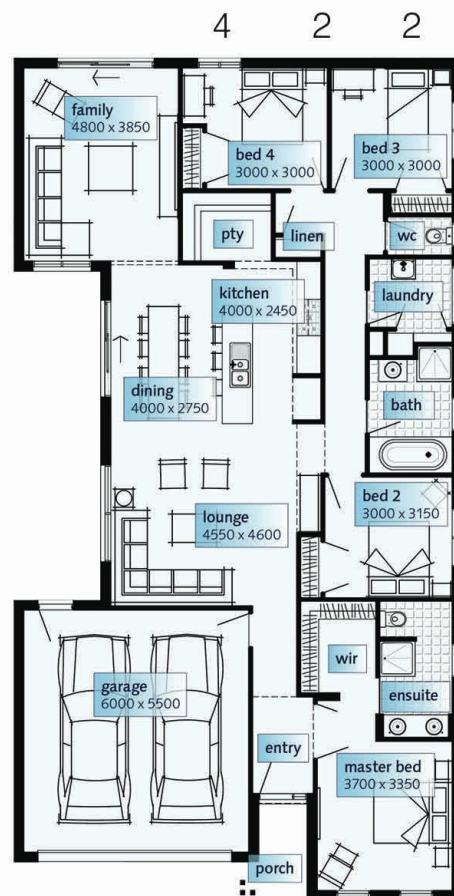


Lot 101 Madison Avenue, Sovereign Rose Estate  
Diggers Rest – 392m<sup>2</sup>

# \$544,200

#### Package Includes:

- ✓ Fixed Price
- ✓ Guaranteed Site Start and Completion Date
- ✓ 900mm Appliances
- ✓ Colourbond Sectional Lift Garage
- ✓ Tiles to Wet Areas
- ✓ Gas Ducted Heating
- ✓ Brickwork Above Windows
- ✓ Solar Hot Water
- ✓ 6 Star Energy Rating
- ✓ 20mm Stone Benchtop to Kitchen
- ✓ Semi-Frameless Shower Door
- ✓ China Basins to Bathrooms & Ensuite



PALISADE		
Dimensions	SQ.M	Squares
Ground Floor	168.17m <sup>2</sup>	18.10Sqs
Porch	3.47m <sup>2</sup>	0.37Sqs
Garage	37.12m <sup>2</sup>	4.00Sqs
Total area	208.76m <sup>2</sup>	22.47Sqs
Width 11.10m		
Depth 20.87m		
Suggested minimum block width: 12.50m New Living range specification		

Please contact: **Simonds Homes**

Name **Stephen Gochman – New Home Consultant**

Number **0408 802 121**



1300 SIMONDS [simonds.com.au](http://simonds.com.au)



Images shown for illustrative purposes and may not represent the final product. Prices are based on availability and price of land. Simonds reserves the right to alter any price or substitute any home without prior notice. All house and land packages are subject to developers' final approval. In the event that a Homesite does not have Survey Pegs in place to identify lot boundary then an additional charge will be added to the cost of the house.